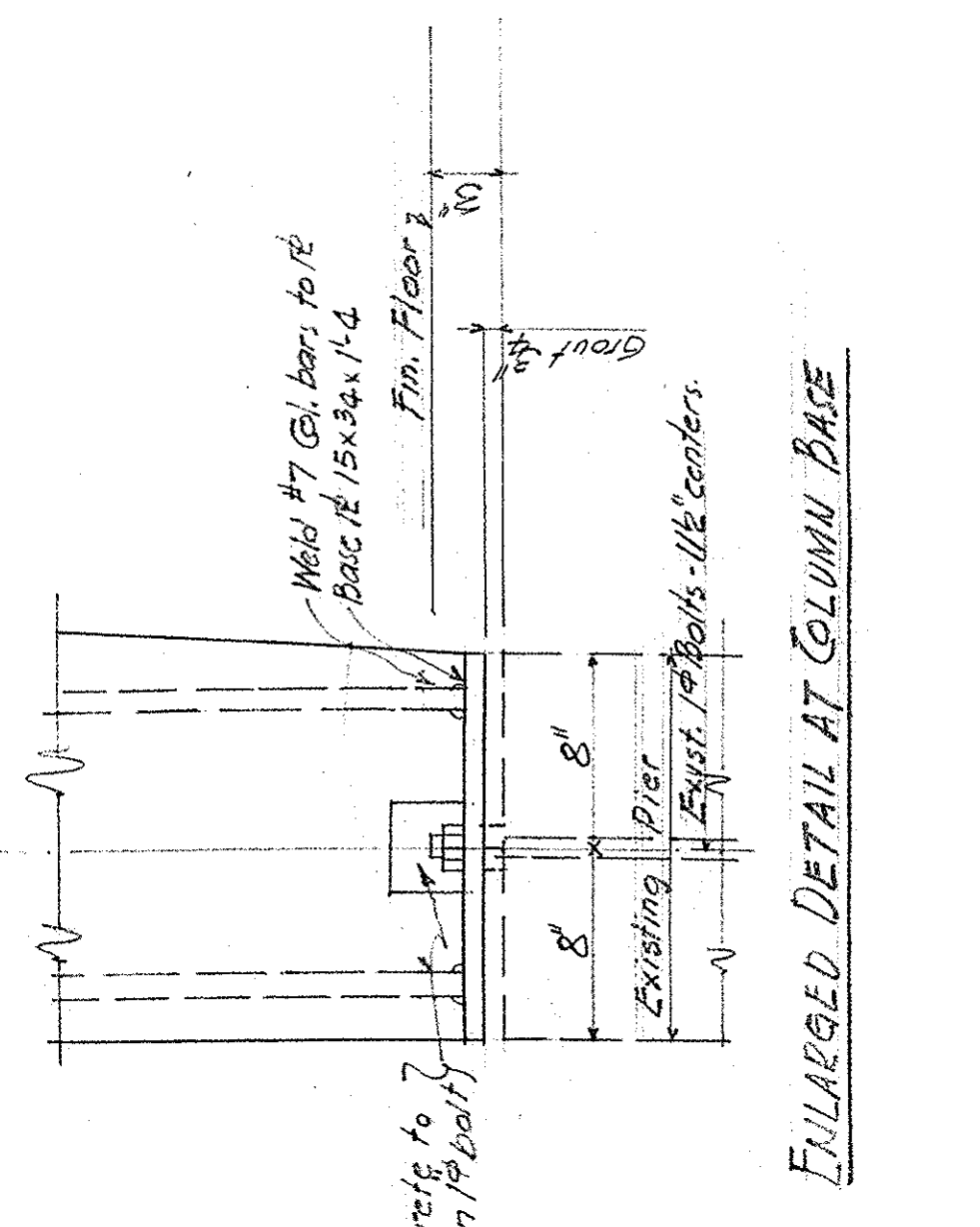


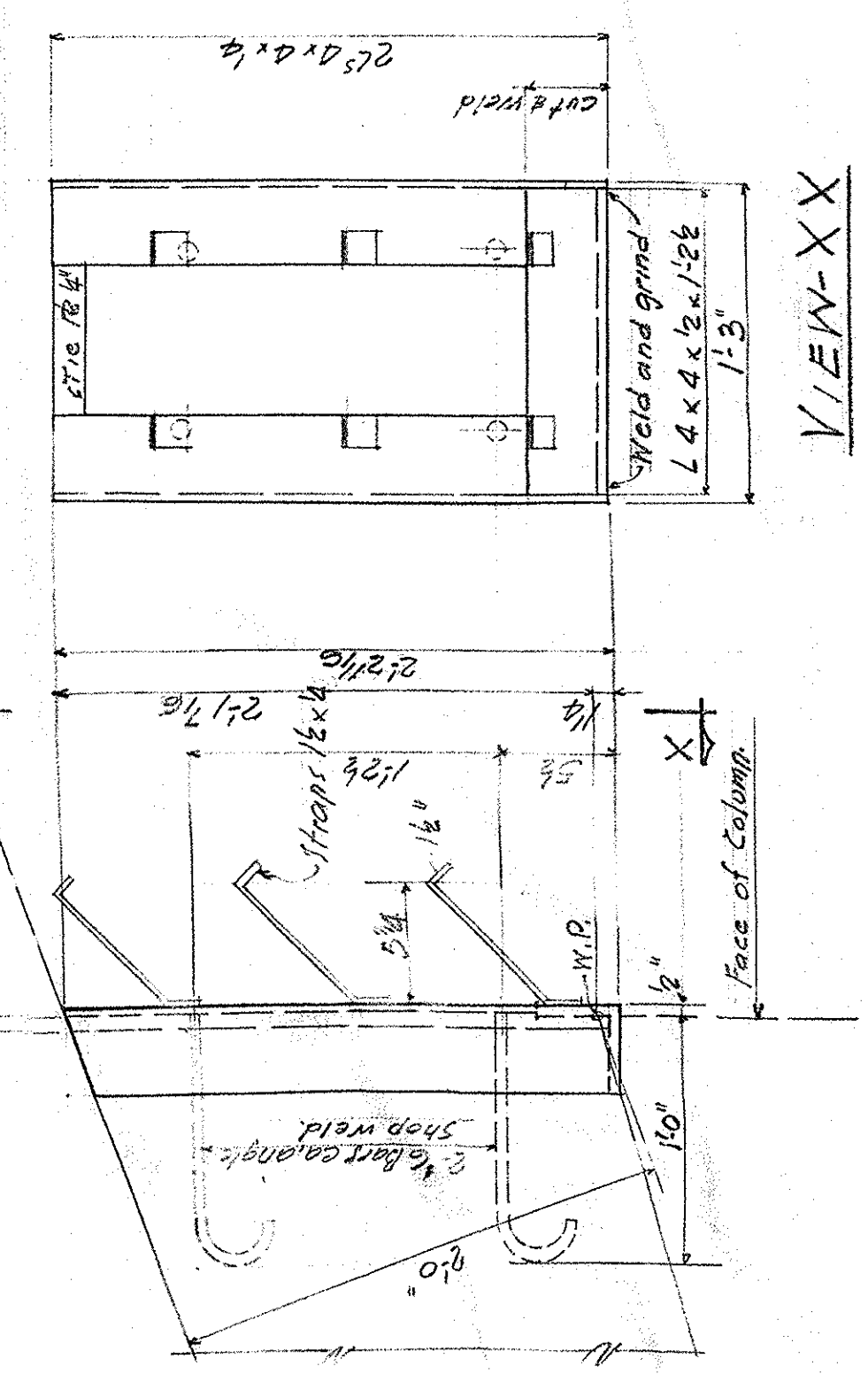
NOTE: Fill concrete above floor to have hydrolic appropriate with concrete masonry per C-14.
 Top of frame and beams RB1-RB2-15' to be finished smooth for reception of finished floor.

SACRED HEART CHURCH
 PINEVILLE LOUISIANA
 REV. PAUL E. CONWAY PASTOR
 BARRON, HEINBERG & BROCATO ARCHITECTS
 1015 WISTERIA ST. ALEXANDRIA, LOUISIANA
 JOB NO. 5406 DATE 2/17/55

HALF ELEVATION OF RIGID FRAME



ENLARGED DETAIL AT COLUMN BASE



ENLARGED DETAIL OF JOIST FOR BEAMS RB1-RB2

