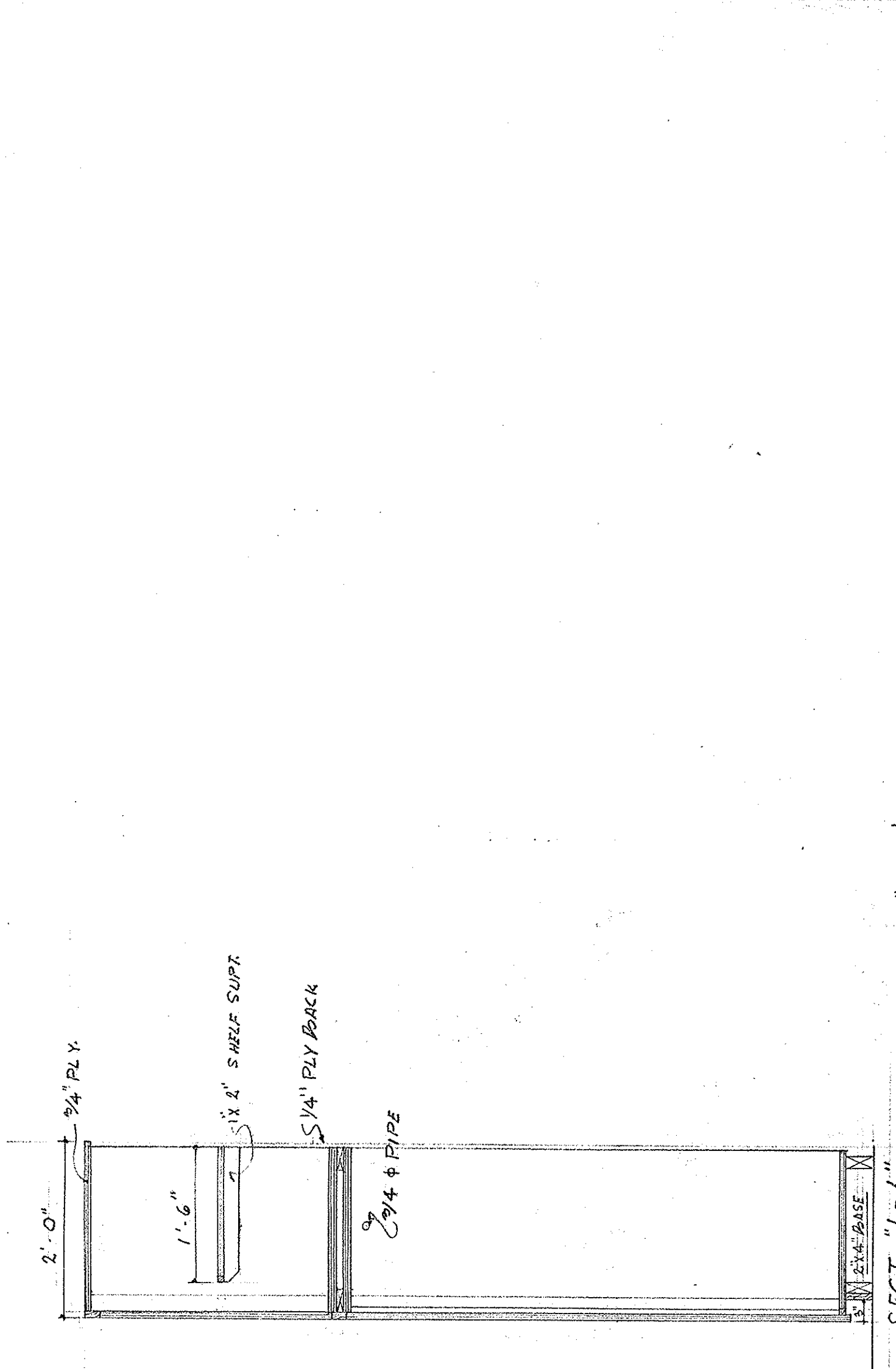
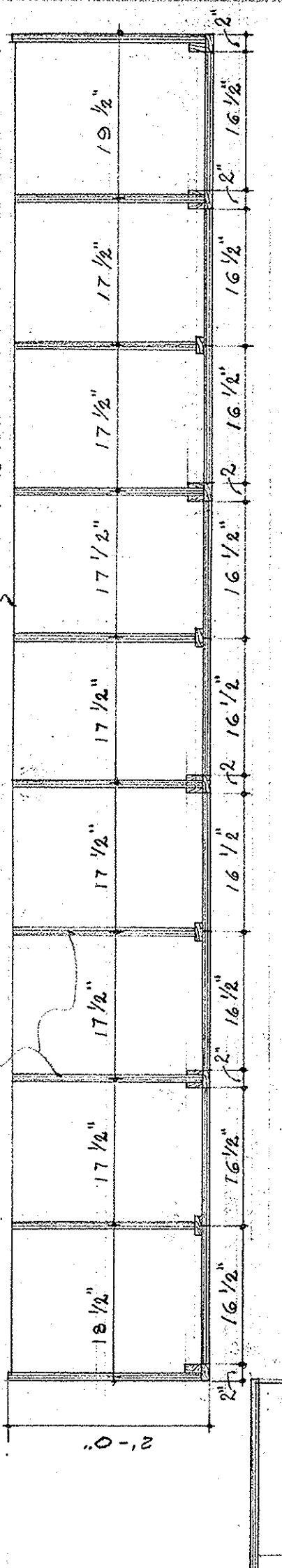


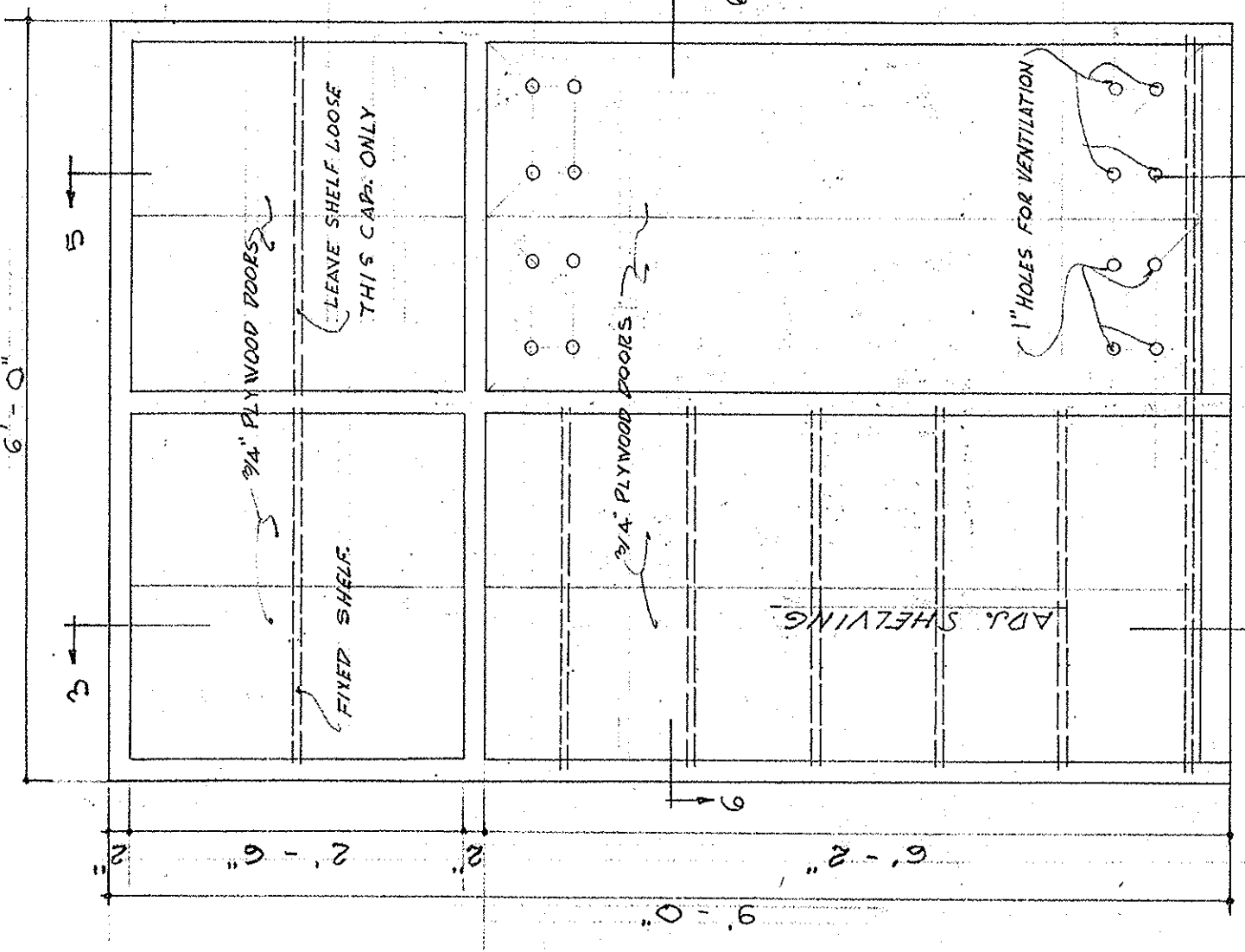
ELEVATION "A"
SCALE 3/4" = 1'-0"



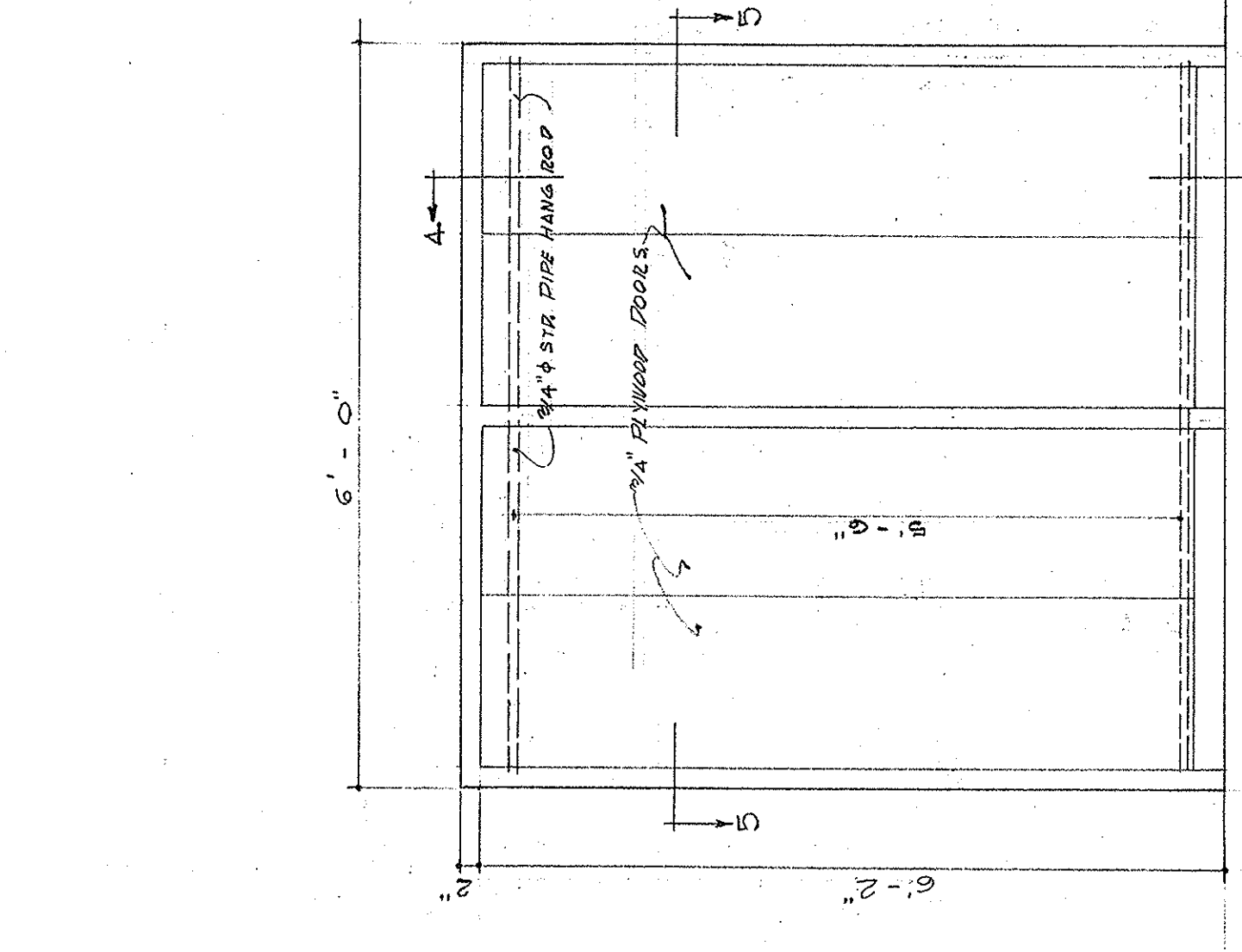
SECT. "1-1"



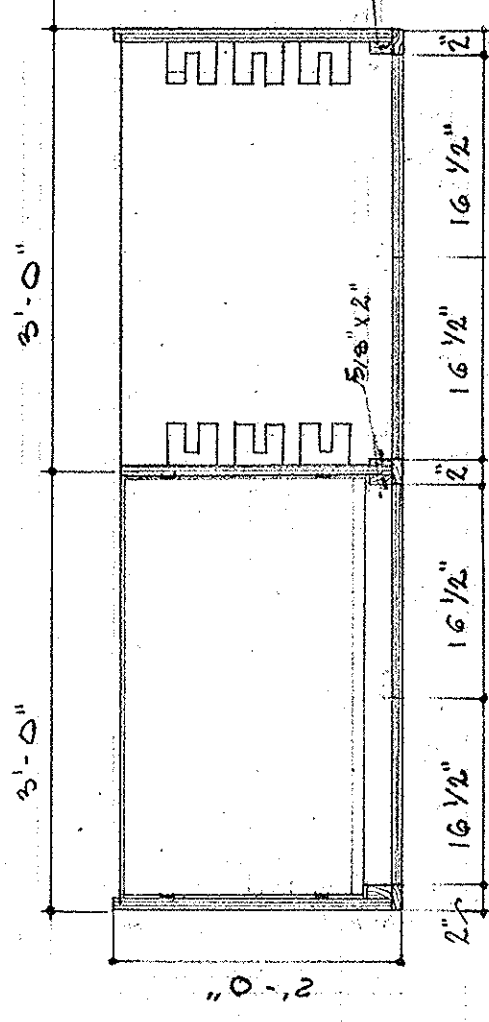
SECTION "2-2"



ELEVATION "B"
SCALE 3/4" = 1'-0"



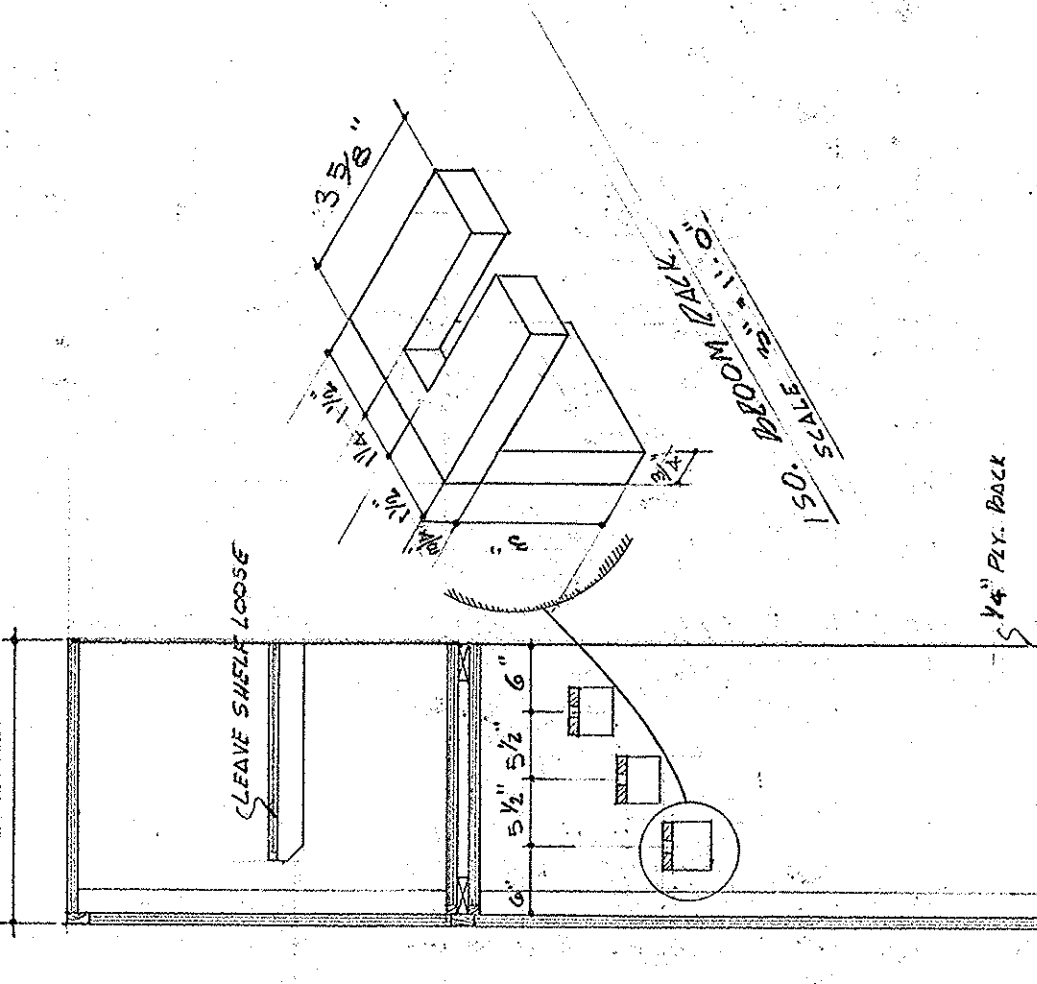
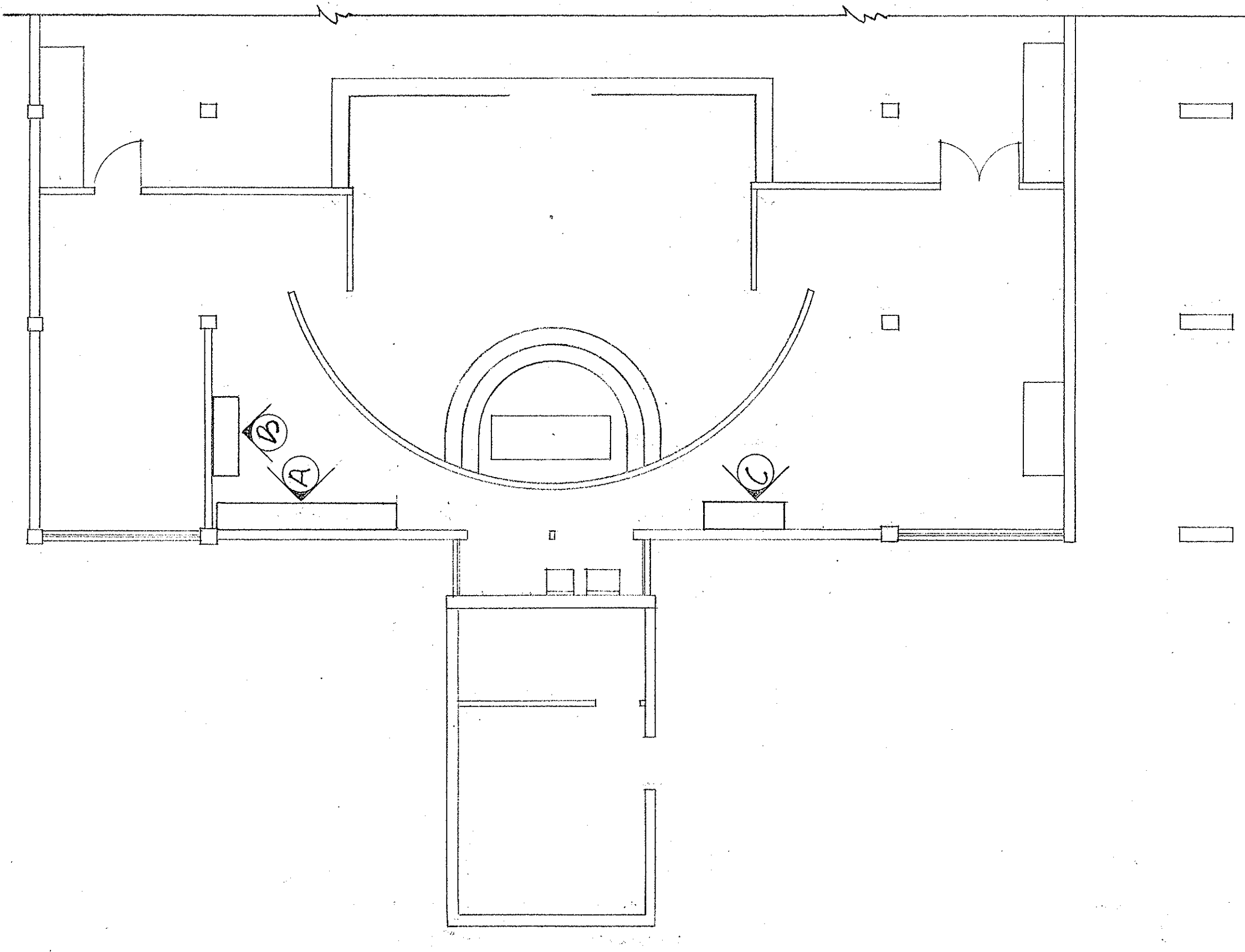
ELEVATION "C"
SCALE 3/4" = 1'-0"



SECT. "3-3"

SECT. "4-4"

SECT. "5-5"



SECT. "5-5"

SECT. "6-6"

SACRED HEART CHURCH
PINEVILLE LOUISIANA
REV. PAUL E. GONWAY PASTOR
BARRON, HEINBERG & BROCATO ARCHITECTS
ALEXANDRIA, LOUISIANA
1015 WISTERIA ST.